



We Started
Knit Apparels in 1987



About Us

NZ Group is a highly reputable and established manufacturing organization in Bangladesh, known for its knit apparel manufacturing. The company was founded in 1987 by a small family business named CA Knitwear Limited. Today, the company has a workforce of 10,000 employees and has diversified its product offering with two other ventures named NAZ Bangladesh Ltd. with the fully vertical set up and NZ Accessories Ltd. to support its core products.

Today, the NZ Group has a large work force making it one of the largest employers in the region. The company's success can be attributed to its strong focus on quality, innovation and customer satisfaction. Through strategic investment in technology, research and development, the NZ Group has been able to stay ahead of the global and local competition and continue to grow. The company has grown significantly over the years, expanding into diverse industries while maintaining a focus on customer satisfaction and incorporation of new technologies and world class machinery.

Overall, NZ Group is a company with strong commitment to growth, innovation and ethical business practices, and it is for continued success in the future.



Mission

We strive to provide exceptional products and services while maintaining a commitment to sustainability, diversity and ethical business practices that exceed customer expectation to maximize value.



Vision

Our Vision is to be country's Leader in innovative apparel technology that will positively impact people's lives and environment.



Values

Our values of integrity, innovation, customer focus, teamwork, accountability and social responsibility are at the core of our commitment to providing exceptional service, fostering a culture of growth and contributing positively to our communities.

Knitting Unit

Capacity

- Single Jersey Machine 68 Set
- Single Jersey Flecee 31 Set
- Auto Stripe Machine 06 Set
- Rib & Interlock Machine 35 Set
- Collar Cuff Machine 19 Set
- Towel Terry 03 Set
- Jaquard 01 Set

40 M.T. /Day

128 Sets Knitting Machine



Dyeing Unit

Capacity

- Open Finish Capacity 45 Tons
- Tube Finish Capacity 05 Tons
- Equalizer Dryer Capacity 09 Tons
- Sueding Capacity 08 Tons (Lafer M/C)
- Brushing Capacity 14 Tons (Lafer M/C)
- Stentering Capacity 50 Tons
- Slitting Capacity 45 Tons
- Compactor Capacity 40 Tons
- Sharing 15 Tons

45 M.T. /Day

32 Dyeing Machine including

18 Sampling Machine



Sewing Unit

Capacity

63 Lines

Total Area:

611,000 Square Feet (Land)

537,000 Square Feet (Building Area)

NAZ Bangladesh Ltd. Unit-1: 29 Lines

NAZ Bangladesh Ltd. Unit-2: 34 Lines

Total Machine capacity - 1720 Sets

Running Machine - 1300 Sets

Sample Machine - 120 Sets

Unutilize Machine - 300 Sets



135,000 Pcs/Day

Chest Printing Unit

192,000 Pc /Day

Capacity

Manual (Table- 20)

50,000 Pcs/Day

Oval (3 Machines/16 Color)

40,000 Pcs/Day

Octopus (3 Machines/6,8,12 Color)

30,000 Pcs/Day

Ambush (1 Machines)

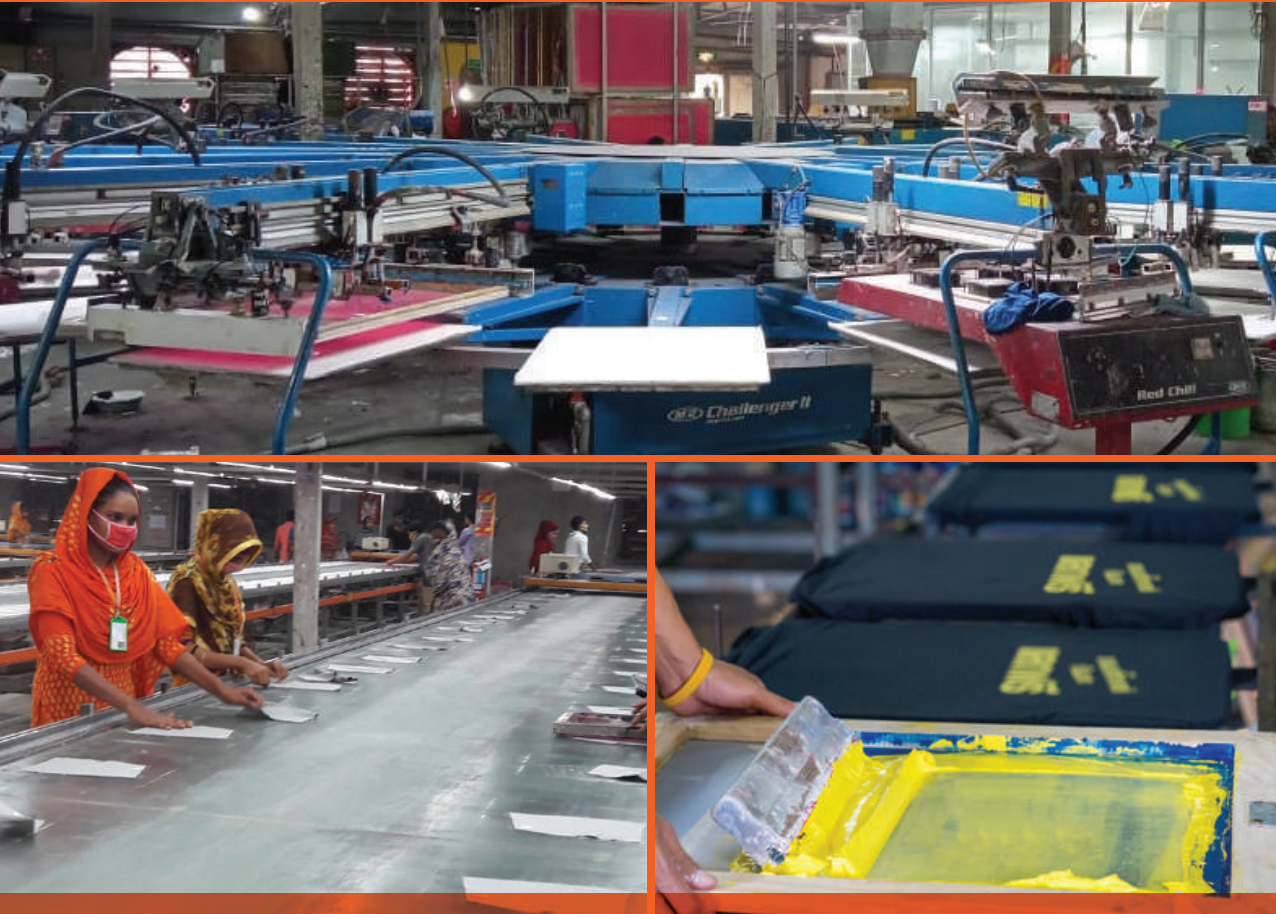
2,000 Pcs/Day

Label Printing (4 Machines)

40,000 Pcs/Day

Heat Seal Making (1 Machines)

3,000 Pcs/Day



Embroidery

194 Million
Stitches/Day

Capacity

Types of Embroidery:

- No of Machine: 20 Set
- Brand Tajima And Ricpeace and Embotect.
- Country of Origin -Japan and China.
- Total Number of Head-294.
- 12 Machine 4 Color Sequins and Area.
- 1 Machine is Coarding/Tapeing.
- 1 Machine is Flat Embroidery.



All Over Printing Unit (AOP & Digital AOP)

365 Ton / Monthly

Capacity

Types of Print:

- Pigment Print Capacity/Month -180 Ton
- Discharge Print Capacity/Month -60 Ton
- Burnout Print Capacity/Month - 10 Ton
- Reactive print Capacity/Month - 60Ton
- Afsan Print Capacity/Month -15 Ton
- Fluorescent Print Capacity/Month - 40 Ton
- Digital All Over Print Capacity/Month - 26Ton
- Sample M/C Capacity/Month - 1 Ton
- Loop Steamer Capacity/Month - 1 Ton
- Contentious Wash Capacity/Month - 1 Ton



Washing

15,000 Pc /Day

Capacity

Types of Washing:

- Garment Pigment Dye
- Cold Pigment Dye
- Acid Wash
- Oil Wash
- Stone Wash
- Dip-Dye
- Double Dip-Dye
- Dip Bleach
- Tie Dye
- Burn Out Wash
- PP Spray
- Enzyme Wash etc.



Testing Laboratory

Our Laboratory Accreditation Certificates : NEXT UK (GOLD),MOTHERCARE, US POLO (Step-1 & 2) ,LC WIKIKI (Accreditation Process Successfully Done Waiting For Certificate) .



Wet & Dry Lab

- Electrolux Washer-01 Pcs
- Labtex Washer-02 Pcs
- Miele Washer-01 Pcs
- Whirlpool Washer-01 Pcs
- Lg Washer-04
- Dura Wash-01
- Dynawash-01
- Rota Wash-01
- Gyrowash-01
- Electrolux Dryer-01 Pcs
- Miele Dryer-01 Pcs
- Bosch Dryer-02
- Weight Balance-01
- Hot Plate Stirrer-01

CF Lab

- Incubator-02
- PERSPIROMETER-03
- Crock Master-01
- Morapex-01
- Orbital Shaker-01
- pH METER-1
- Electical
- Conductivity Meter-01
- Water Purification-01
- Weight Blance

Sample Preparation

- Lock stitch Sewing Machine
- Overlock Sewing

Physical Lab Machine

- Precision Ac
- Wrap Reel
- Yarn Twist Tester
- Yarn Appearance
- Electronic Crockmeter
- ICI Pilling Tester
- Martindale Pilling Tester
- Wweight Blance
- Thermohygrograph
- Moisture Meter
- Hydraulic Gsm Weight
- Brusting Shrengh
- Digital Hygrometer
- Tensile Strength Tester

Testing Laboratory Test Capability

The testing laboratory's test capability ensures accuracy, precision, reliability, and sensitivity across a wide range of products and scientific applications.

- Color fastness to Washing
- Cross Staining to Washing
- Color fastness to Rubbing
- Color fastness to Water
- Cross Staining to Water
- Color fastness to Perspiration
- Color fastness to Saliva & Sweet
- Color fastness to PheNolic Yellowing
- Color fastness to Oxidative Bleach Damage
- Bursting Strength
- Pilling Resistance
- Swiss Pilling/Martindale Pilling
- Mass per Unit Area/GSM
- Dimensional Stability to Washing
- Appearance Assessment after washing
- Spirality/Twisting after Washing
- Print durability
- Embellishment Durability (Childrenswear)
- Embellishment Assessment after 5 x Label washes
- Foil Durability
- Durawash Appearance for Garments/Products
- pH of Aqueous Extract
- Yarn Count
- Moisture Content Test
- TPI Test
- Stretch & Recovery Test
- Fibre Shedding



CA KNITWEAR LIMITED

LEED PLATINUM CERTIFIED



Sewing Unit

Capacity

48 Lines

Total Area of Building Will be
600k Square Feet

Total Machines Capacity – 1570 Sets

Running Machines – 1200 Sets

Sample Machines – 70 Sets

Unutilize Machines – 300 Sets

1,25,000 Pc/Day

Design Studio

NZ has a dedicated design team with head office in Baridhara DHOS, Dhaka. Our combined strength with fashion design and graphic designers and distinct development team in printing, embroidery and sample department compliments our capabilities in garment design and ensures the key areas like prints, embroidery, wash etc. value addition in our designs.

With A Strong Creative Workflow NZ Design Studio Provides The Below Facilities For Its Customers.

Workflow

- Trend Analysis & Forecasting
- Design Proposal
- CLO 3D Design
- 3D Technical Department
- Product Development
- Co-creation
- Artwork Development
- Fashion Enovation



What We Are Good At

We are good at solving your problems related with sewing, finishing, and packaging products.

SEWING PRODUCTS | FINISHING PRODUCTS | PACKAGING PRODUCTS

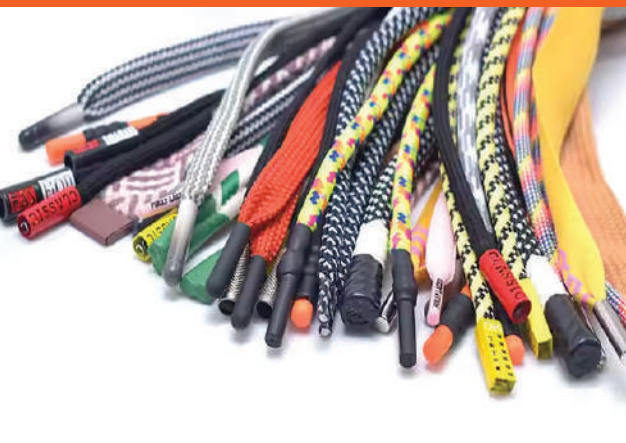
- | | | |
|--------------------|------------------------|------------|
| ● Sewing Thread | ● Offset Printed Item | ● Carton |
| ● Printed Label | ● Back Board | ● Poly |
| ● Drawstring | ● Neck Board | ● Gum Tape |
| ● Twill Tape | ● Hangtag | |
| ● Gross Gain Tape | ● Price Ticket | |
| ● Rib Tape | ● All Kinds of Sticker | |
| ● Crochet Elastic | ● Tissue Paper | |
| ● Jacquard Elastic | ● Cascade Box | |
| ● Pompom | ● Photo Inlay | |
| ● Tassel | ● Banderole | |
| | ● Injection Molding | |

NZ Accessories Limited, a sister concern of NZ Group, is an export linkage trims and accessories company. Founded back in 2005, the Company started its operation with corrugated carton, polybag, gum tape, narrow fabrics, sewing thread, and offset printing unit for it's own consumption.

Now NZ Accessories limited has expanded business covering an area of 2,00,000 (two lacs) square feet. The facility is supported by the state of art factory equipped with world famous machinery and equipment having high efficiency, reliability, and company reputation. The operation is run by a team consisting of both young & experienced, committed, technical, customer service, Quality & other professionals of various discipline under the guidance and dynamic leadership.

We are mostly known for maintaining quality by highly expert quality team which helped bag the certifications from Oeko-tex, FSC, and GRS.





Capacity

SEWING THREAD :
Capacity: 35,000 Cones/Day

PRINTED LABEL :
Capacity: 5,00,000 Pcs/day

DRAWSTRING :
Capacity: 1,20,000 Pcscs/Day

TASSEL :
Capacity: 10,000 Pcs/Day

TWILL TAPE :
Capacity: 80,000 Yards/Day

RIB TAPE :
Capacity: 20,000 Yards/Day

JACQUARD ELASTIC:
Capacity: 20,000 Yards/Day



Capacity

ELASTIC :

Capacity: 80,000 Yards/Day

OFFSET PRINTING :

Capacity: 8,00,000 Pcs

INJECTION MOULDING :

Capacity: 20,000 Pcs

CORRUGATED CARTON :

Capacity: 20,000 Pcs/Day

GUM TAPE :

Capacity: 15,000 Roll/Day

POLY BAG :

Capacity: 3,00,000 Pcs/Day

Our Partners



next

MATALAN



PRIMARK®



LC Waikiki

max

babyshop

O'STIN

falabella.

OCHNIK

Our Certifications



Awards & Achievement



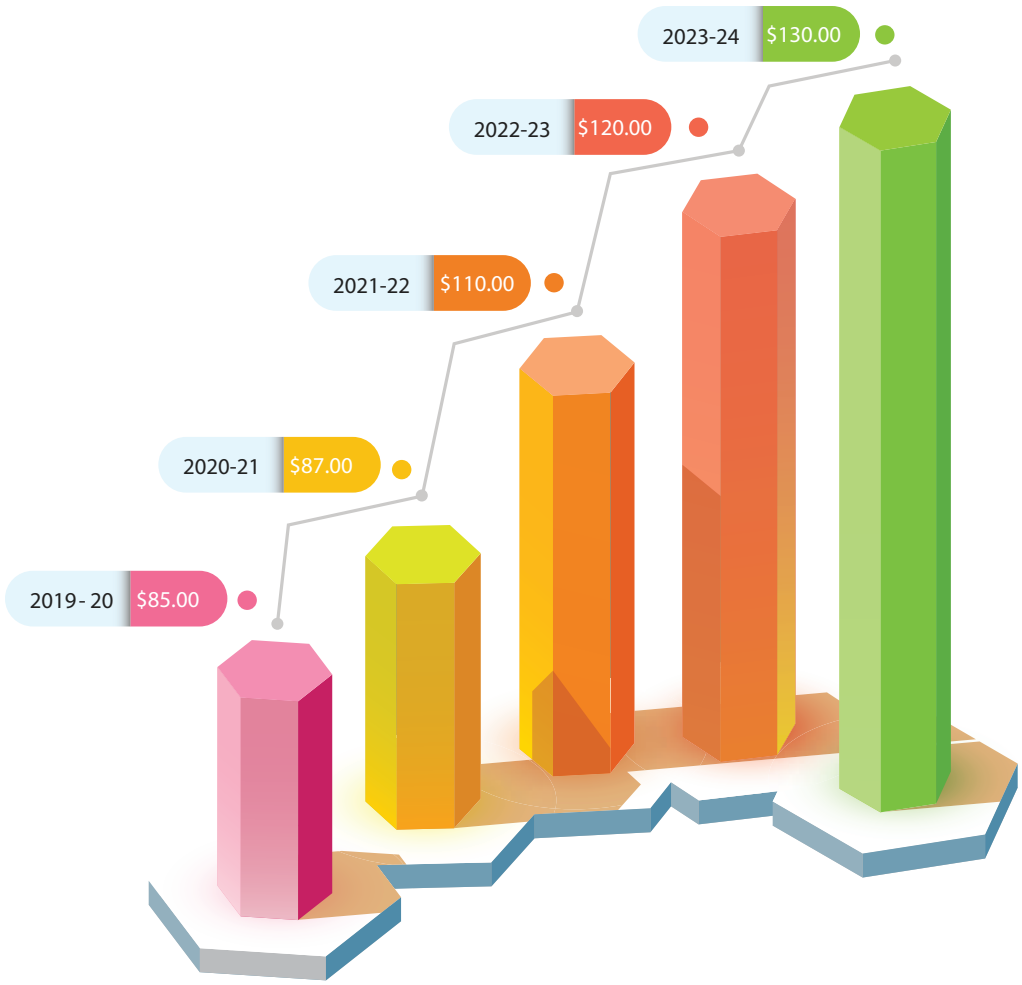
- In 1993, We became 3rd Largest Exporter in Bangladesh & got the National Export Award from BD Govt.
- Won the "Supplier Of The Year-2016" award from Mother care.
- Won "W.S.T. award 2016" for its outstanding performance to save & secure the environment." from Green System Solution. We are the single supplier in BD, who achieved Platinum certificate.
- "Tesco Supplier Award 2016" on Outstanding partnership in Corporate Social Responsibility.
- "Novozyme Combipolish Champions Award 2017" on Sustainable Production by Novozyme (Denmark) from the Danish Ambassador.
- Won the "Supplier Of The Year-2017" GOLD AWARD from Next.
- NZ Group achieved "Green Project" Certification for CA Knitwear Limited.
- CA Knitwear Limited achieved "LEED Platinum Certified" from LEED year 2022.

Technology Integration

- Dream Apps (Finance Software).
- Logic (ERP Software).
- OTS (Order Tracking System).
- Production Planing Software.



Turnover in Million USD





EFFLUENT TREATMENT PLANT (ETP)

We have been awarded as best of WST “in performance of using dyes and chemicals in accordance to green peace conform to 100% Detox. For this program we are using best yarn (combed compact) to avoid the enzyme wash as well as save green by reengineering the process

ZDHC– Level-2 Certified

– Gateway Registered Certified



Our Goal :

We will not discharge any water after ETP and reuse the whole ETP discharged water for dyeing processing again treated by WRP project.

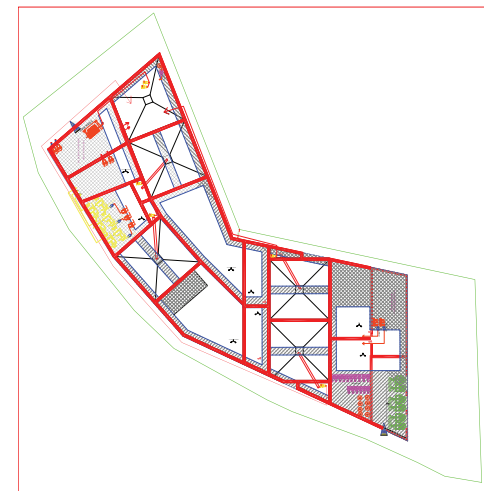
WATER RECYCLING PLANT (WRP)

As a commitment of sustainability, we are going to start our most prestigious project named WRP (Water Recycling Plant) by which we will treat our after dyeing waste water and will use the whole water for dyeing process again.

In the process we will discharge zero amount of waste water to the environment which will save our beautiful earth and make the world more greener.

Our project capacity will be 8000 m³/day which can support 50 MT/day dyeing plant capacity.

★ UNDER CONSTRUCTION LAYOUT ★



Child Care, Health & Safety Unit

Our Service

- Incentives
 - Child Care Room
 - Pure Drinking Water
 - Medicines and Doctor
 - First Aid Boxes for Every 100 Workers
 - Paid Maternity Leave as per Law
 - Worker Welfare Department
-
- No Child or Forced Labor
 - Free Transportation



Workplace, Environment

Service & Benifit

- Festival Bonus
- Attendance Bonus
- Earn Leave Encashment
- Maternity Leave
- Group Insurance
- Transportation
- Cultural Functions

- Sports Events
- Minimum Wages
- Housekeeping & Cleaning etc.
- 2 Stored Central Mosque





Factory:

NAZ Bangladesh Ltd.

5, Bishuya Kuribari, Mirzapur

Gazipur-1700, Bangladesh.

CA Knitwear Limited

Bhobanipur, Mirzapur, Gazipur-1700.

NZ Accessories Ltd.

K-02, West Joydebpur, BIDC Road

Joydebpur, Gazipur-1700.

Corporate Office:

Anannya Shopping Complex (4th Floor)

Lane No: 13, DOHS Baridhara

Dhaka-1206, Bangladesh.

sumsuzzaman@nz-bd.com

www.nz-bd.com

